



November Meeting

November 21, 2020



Mark Gray's F-15E Strike Eagle in 1:32 scale was great to look at. Mark built it with full Eduard cockpit details and Aeromaster decals to depict a bird going off to war in Iraq in 1991 from the 336th fighter squadron (Rocketeers) from Seymour Johnson AFB. More pictures on page 6

Attendance: Marshall Smith, Jim Gower, Andy Fulcher, Jeff Maples, Jim Harriet, David Stiteler, Mark Sandvigen, Chuck Colucci, Mark Gray, & Alan Welch

Jim Gower opened with comments on:

The December Meeting of the ECPMOD. They may have to shut down the VFW Hall due the latest restrictions, information on the decision will be forthcoming.

DownEastCon, Jul 10, 2021. He has spoken to PAM and depending on the vaccine success and further lockdowns, we are still playing it by ear. As of now we are still booked for the contest.

Items to be discussed: Contest
(continued on page 4)



Inspecting Mark's F-15 during the meeting . . . that big bird stood up to close inspection very well.

Events

See full information on our website.

39th Annual Smoky Mtn Model-Con

Presented by
The Knoxville Scale Modelers Assoc.



SATURDAY, March 6, 2021

9:00 am to 4:00 pm

KNOXVILLE CATHOLIC
HIGH SCHOOL
9245 FOX LONAS RD. NW,
KNOXVILLE, TN 37923

MODEL CONTEST

Aircraft, autos, armor,
dioramas, fantasy, figures, sci-
fi, ships, and more on display.

Contest entry forms &
judging info available
on our website.

HOBBY VENDORS

RAFFLE DRAW with great
prizes

Contestant Admission:
Adults - \$10.00 for first 3
models and \$1.00 for each
additional model.
Under 18s - FREE
General Admission:
Adults - \$5.00
Under 18s - FREE

VISIT OUR WEBSITE FOR DETAILS & IDEAS:

WWW.KNOXVILLESCEMODELERS.COM

SEE OVER FOR SHOW
CONTACT INFORMATION
AND DIRECTIONS.

New Bern Maritime Modelers Guild.

Meets at the VFW hall, 3850 Butler Rd, New Bern, NC the second Saturday of each month at 12:00 noon.

For up to date info on their meeting: <https://www.facebook.com/nbmmgnc>

Wilmington, NC Plastic Modelers

will hold their next face-to-face meeting as another open air gathering again, <https://www.facebook.com/groups/117277425006833>

Jacksonville NC Plastic Modelers

will meet December 16 at 7:00 pm at The Hobby Chest, 345 Western Blvd, Jacksonville, NC. The Hobby Chest carries a great selection of hobby kits and supplies and is a grand center for tabletop gaming activities. <https://www.facebook.com/groups/1319666224752922>

IPMS Eagle Squadron General meeting 1:00 pm - 3:00 pm at the American Legion post 116 and an
(continued on page 4)

Scale Colors Acrylic Paint <https://scalecolors.com/>

I've recently used scale Colors for the first time on a project and was very pleased with the results. I found the paint adheres to the surface of the plastic better than normal acrylics. It seems there is more to the curing than merely the carrier evaporating, there is also a chemical bonding.

Scale Colors™ was envisioned nearly ten years ago but like all well-intended projects, didn't materialize until a need arose

That need came about as a result of a 1/200 Trumpeter USS Missouri, a 4-foot long plastic model kit of a very large ship. It was almost immediately realized that the typical 1/2oz. bottles of paint simply weren't going to work, so we started experimenting with alternative paints – automotive, industrial, even commercially-available interior paint. Nothing worked like we'd intended, so we connected with a paint chemist and starting formulating a completely new formula of acrylic paint.

The results of 3 months of testing and mixing were Scale Colors, a water-based acrylic paint that is specifically color-matched to historical colors.

Scale Colors' first release group includes the principle colors for US Navy warships from 1942 to present day. As time and demand allow, additional colors have been added covering a wide array of subjects, from warships to aircraft, armor, and sci-fi subjects.

In addition to paint colors, the owners of Scale Colors are re-launching the idle WARPIGS™ brand of washes and scale modeling pigments, with 5 wash colors and 20 pigment colors expected to debut in the 1st quarter of 2019. The addition of pigments and washes will allow model-

(continued on page 5)



John Ratzenberger takes us through building a 1:350 mixed media kit of an English paddlewheel coastal steamer, issued by AJM, easily one of the most arcane kits on the market.

Background

Built for the Royal Navy as HMS Melton in 1916, one of 32 in the Racehorse Class of paddlewheel coastal steamers, she served on Auxiliary Patrol and in the Mine Clearance Service. Post-war she was sold to the breakers but picked up by The New Medway Steam Packet Company in 1929, renamed Queen of Thanet, and converted for excursion work on the River Medway and River Thames as well as cross-channel voyages to Calais, Boulogne and Dunkirk.

In September 1939 she was requisitioned by the Admiralty for mine-sweeping duties and commissioned as HMS Queen of Thanet, pennant number J30. She took part in the Dunkirk evacuation rescuing 4,000 men in four trips. For Operation Overlord in June 1944 she was stationed at Selsey as the Mulberry Despatch Control Ship.

After the war she went back to civilian life doing excursion work around the Thames Estuary, being renamed Solent Queen, but in 1951 while in a shipyard for survey and repair work, she caught fire and was written off.

One of these ships, the Medway Queen, is currently being restored

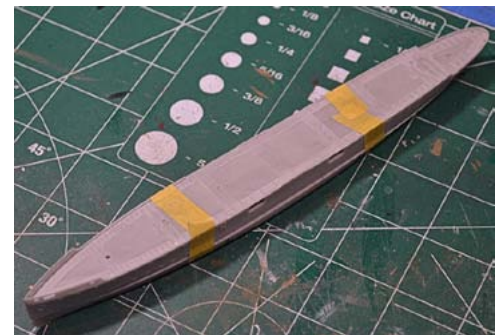
(continued on page 3)



Overall quality of resin was good.



The only major issue was the fit of the lower hull. Surgery was required.



This complicated the attachment of deck details later in the build.



The kit wooden deck looks good as done but required some surgery.

Workbench

(continued from page 2)

and is expected in-service about 2024.

I bought the kit online from either the manufacturer or from Hannant's as soon as I saw it advertised because it is quirky and because I needed something for a Battle of France GB. Unfortunately, the model apparently reflects the 1942 re-fit so it's somewhat of an anachronism.

The Model

It's a good kit overall with resin hull and parts, photoetch details, and wood decks. The instructions are very clear and well laid out. AJM Models have a 3-D view of the construction online which helps. The only shortfall is the resin parts list, which is a blurry grey photo - it is annotated with part numbers but since the resin parts have no numbers it isn't much help.

The resin is OK; it seems like it was done by different companies. The two winches are exquisite, the rest of the deck furniture not as good. There are no part numbers on the pour blocks and the blurry parts photo didn't help. Nonetheless, it was all there and nothing was damaged. There were some pinholes.

The hull can be waterline or full, however the upper and lower pieces do not align fore-aft. After some study, I cut the lower part into forward, center, and aft sections then glued the forward and aft sections to the upper hull. Then I reversed the center section front to back and fit it in between. It took just a little



The paddle boxes were an issue to fit against the hull requiring a bit of finessing.



All in all a nice looking build and one that will spark a lot of questions.



There are few military ship models sporting paddle-wheel propulsion dating from the 2th Century.



Paints are White Ensign Colour Coats, enamel, brushed on.

sanding and filling to get a nice clean hull and much easier than trying to reshape it in hot water.

The paddle boxes were each a single piece and too complicated for the casting process and to get cut from the pour blocks and to fit against the hull. It was not a good start to the build.

The photo-etch is good but very thin, fragile, and difficult to work with. The rails were fitted to the deck but slightly off in places. The two bandstands have very spindly legs and I broke a number of them off.

The wood decks were good but needed some adjustment to fit. I found the best way was to put the hull halves together, then get the paddle boxes on, then fit all the decks, doing some surgery where needed. I put a coat of flat varnish on them in an effort to protect from dirt, paint, etc.

After that it was just a matter of working, in this case, back to front by section, adding all the parts and deck furniture, with the paddle wheels being about the last to be constructed.

Of course, the flaw in that is that I had to assemble them with the ship upside down, trying not to knock off any of the detail.

Paints are White Ensign Colour Coats, enamel, brushed on. When done, I gave it a light spray of Model Master Acrylic Flat to tie it all together.

A few tense moments and it didn't really turn out as I envisioned but I enjoyed the build. ■

-John Ratzenberger

I believe that by next month or certainly by the beginning of the new year we may be able to post some news about several exciting new products. I hope to start a new column called, TMNew Releases !

- Editor

Nov. Meeting

(continued from page 1)

categories, sponsorships, whether there will be a fee for vendors, hall arrangement, and invitations to other modeling clubs.

December 5, 2020; 2:00 P.M. the North Carolina Ship Modeler's Club will be holding its auction with all proceeds going to the club unless otherwise arranged. All model types, tools, excess modeling materials are welcome to be auctioned.

Mark Gray – Tamiya 1/32 F-15E Strike Eagle modeled after the aircraft which fought in the 1991 Gulf War. Mark added Eduard aftermarket cockpit and afterburner cans which he said were far superior to the kit's. It took him about six months to build and paint. The model was painted with SAC and Gunship gray with after market decals added to reflect aircraft from the 4th TFW.

Chuck Colucci – Tamiya 1/35 Panzer Kampfwagen (PzKfw 38t) AUSE E/F and 1/35 Tamiya Jagdpanzer 38t Hetzer. This was his first trial with individual tank links – given the finish on the model, it was a very successful first trial. Chuck worked with numerous paint finishes (Tamiya, Model Master, oil washes, and Tamiya Sand) to get the right look. He also used Durham water putty along with pigments to get the right mud colors for the tracks and road wheels.

Jeff Maples - Grumman XF5F-1 Skyrocket. Jeff continues to amaze with the finishes he gets on the models. He used Testors yellow for the wings and Alclad II White Aluminum on the fuselage to get the right look and feel for April of 1940.

He also used Artist Loft Acrylic Pencils and how the pigment was applied to get panel details. The pencils were used to trace the panel lines, then a thin brush dipped in water was used to go over the acrylic. The acrylic then dissolved and flowed into the panel lines. It is now his



Jeff Maples brought in his 1-48 scale XF5F Skyrocket in between the wars livery. The build is a Minicraft release and the kit brought high praise from Jeff. He tried new techniques for panel lines detailing and canopy finish. More details below.

favorite way of creating relief on his aircraft models.

Alan Welch - brought in the USS Montrose which he has been working on for some months in an effort to bring this venerable kit, (circa 1956) up to current standards. Alan has more photos & captions on page 5. ■

-Mark Sandvigen

Events

(continued from page 1)

Informal Build Night, Hangar 18 Hobbies the last Wednesday of each month from 6pm-8pm. Hangar 18 has a wonderful meeting space, and carries all the modeling gear you could need. <https://www.facebook.com/IPMSEagleSquadron>

Carolina Maritime Model Society

Next meeting will be Saturday, December 5, 2:00 pm, at the North Carolina Maritime Museum, 315 Front St., Beaufort, NC.

This group builds ships and boats and encourages scratch building and the museum is a great meeting space.

<https://www.facebook.com/CMMSNC> ■

Minicraft Xf5F

Fate stepped into my life (in the form of Alan Welch) and placed this Minicraft release of the Grumman XF5F-1 Skyrocket on my model bench.

Alan had ordered this only to realize that he had not ordered his scale of 1:72 but the 1:48 kit.

Two shots of whiskey and one idea later, Alan presented me with the idea of a trade for a 1:72 kit that I had in my stash. That ended up being my 1:72 Italeri Henschel Hs-129 B3 Tank Buster (*which I have not seen come to fruition from AW*).

The Minicraft kit is a simple and fun build with a low piece count. I was most excited about building a plane where I could spray the traditional Navy yellow wings. I sprayed 3 coats of Gloss Yellow enamel (Testors ¼ oz bottle) from my Iwata Neo airbrush with wet, light sanding between each coat.

All the bare metal is Alclad II White Aluminum with a final coat of Testors rattle can Gloss. Due to the high shine, the 'dip' in the fuselage

(continued on page 6)



Starting at the bow the BCM 40mm quad mount, crew, Mk 51 gun director are shown to good effect here.



Skylarking BCM Marines gather to watch the show next to a DUKW from AFV club, all in 1:350 scale.



Meanwhile, further aft a deck crew lowers another LCI to join the land-exercise.



BCM's 5" gun, 40mm twin mounts, life rafts, gun crews, and Mk 51 gun directors used here on the fantail.



Chuck Colucci brought in two new armor builds, a Tamiya 1:35 Panzer Kampfwagen (PzKfw 38t) AUSF E/F and 1:35 Tamiya Jagdpanzer 38t Hetzer. Both were outstanding builds showing vehicles after some usage. The finishes were perfect and the weathering was spot on.



In addition to using virtually every formula of model paints plus a mud of his own mixture chuck built the tracks of both vehicles using individual track links included in the kits. The result was spectacular.

Scale Colors

(continued from page 2)

ers access to countless combinations of weathering and contrast in their miniatures.

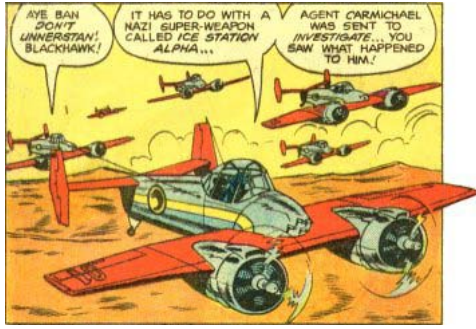
Scale Colors is not a factory-based paint company. Scale Colors is owned

and operated by modelers, who are simply trying to address a need that currently exists for warship modelers.

Scale Colors currently offers more than 120 different colors for ships, aircraft, and armor subjects with new releases schedule for the new year. ■

-Jeff Herne

Jeff's XF5F



NOTE: This is not Jeff's model of the Grumman XF5F-1 Skyrocket but a frame from a period Blackhawk comic. But it serves to show how ingrained this design has become even though it never progressed past prototype stage.

https://en.wikipedia.org/wiki/Grumman_XF5F_Skyrocket

spine was very visible. The tail section, when glued to the fuselage, was not level and left the said mentioned 'dip'. Here is where I spent most of my time with putty and primer.

Round 3 being perfect, I re-sprayed the final white aluminum.

Because the **XF5F-1** was an experimental plane and never saw war time action, I kept the subject clean with no weathering.

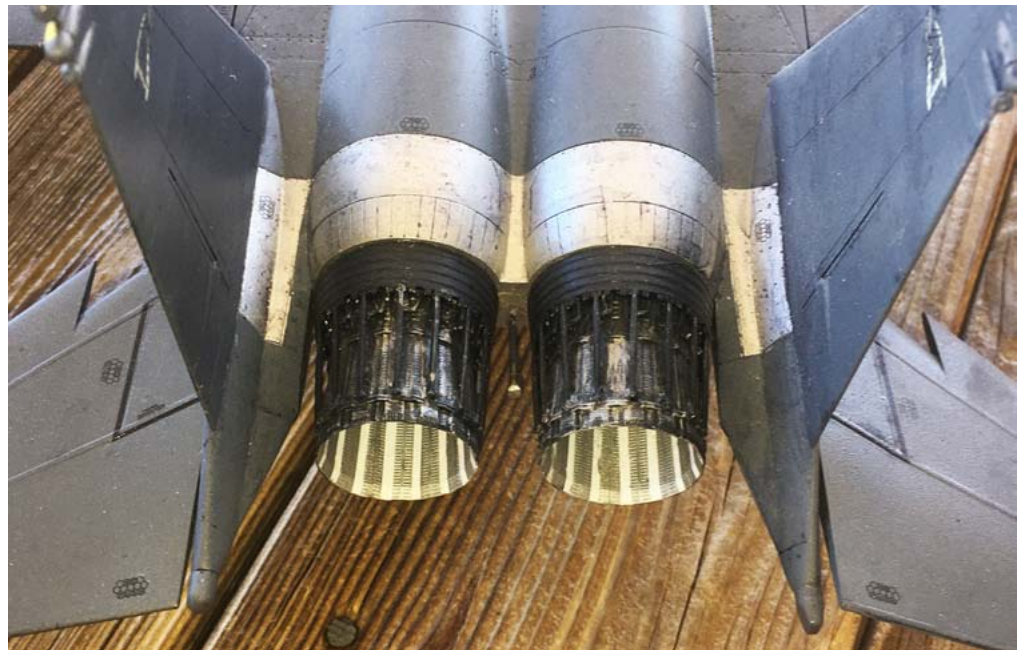
The only 'accent' colors I used (at the very end of the build) were on the panel lines. Here I used AK's new Weathering Pencils for Modelling. The pencil colors are made from compressed acrylic pigments. I would sharpen the pencil, drag it along the panel line, and with a water damp 0/5 brush lightly drag it along the same panel line where the pigment would 'melt' and settle right into the groove. Because of the excellent control, I would recommend the AK pencils highly.

Only a hand full of, actual, Sky-rockets were built in the late 1930's but, fortunately, Minicraft has made plenty of 1:48 kits for Alan to mis-order. Have your expendable 1:72 kit ready just in case

-Jeff Maples



So detailed you can almost smell the JP-4. This photo gives a good idea of the size of Mark's build. Weighing in at 3-4 pounds the Tamiya 1:32 scale kit built well but certainly benefited from some aftermarket additions.



Third party cans added a bit more realism to the aft end of Mark Gray's F-15E Strike Eagle. Mark admitted he actually looked up the exhausts of an in service aircraft to check the depth the fans were recessed. That's going that extra mile, Mark.



Don't forget, next month's meeting will be Saturday, December 19, 12:00 noon till 2:00 pm and all members are requested to bring some builds please.