



In The Beginning



Richard Adams' magnificent build of the Wright flyer is Wright on! While not a plastic model, it's wood and paper . . . old school, the build and attention to detail is phenomenal. The model is 1/20 scale which makes it all the more impressive. Kudos, Richard.

Meeting Debriefing

Attendees: Alan Welch, Mark Sandvigen, Robert Bracken, Dennis Korn, Chuck Colucci, Richard Adams, Marshal Smith, Jim Harriet, Richard Adams, Andy Fulcher, David Mohr, David Stiteler, William Reese

Show-and-Tell:

William Reese brought in a Tamiya 1/48 scale F-14A Tomcat and presented the model and improvements made by Tamiya in the way of decals (superior color saturation), carrier deck with "shooter". He also explained that he is on several Facebook sites with F-14 pilots and the kit agrees with their recollections. William also brought in a Hasegawa 1/48 Nakajima Ki44-I Type2 SHOKI (TOJO). He modeled this after the 47th Sentai which was stood up after the Doolittle raid on Tokyo to protect the

Emperor and the city. He also brought in a Monogram 1/48 scale P-51D modeled after Don Blakeslee of the 335th FS, 4th FG. He modified the fuselage and used CAM decals to reflect Blakeslee's aircraft.

Marshall Smith brought in several containers of acrylic thinner and cleaner. The solutions have been a mainstay of the model railroading community for a while. The thinners can be used for all acrylic paints but Tamiya Acrylics which uses alcohol for thinning and cleaning.

Marshall also brought in a 1/48 scale Tester's Bell Boeing V-22 Osprey 503 as a WIP. The kit has major fit and finish issues. Club members that have tried this kit all agreed it was quite poor in its production standards. A discussion

(continued on page 4)

Contents

Meeting Debriefing.....	1
Events	1
Con Roundup	2
Bullitt's Mustang.....	2
Being Thin.....	3
Meeting photos.....	9-13
IPMS Membership App.....	13
CATCH '22.....	14

Events

Contact & meeting info on regional model building groups and info on upcoming cons and other events.

New Bern Maritime Modelers Guild.

Meeting location FairField Harbor Fire Station, 585 Broad Creek Rd., New Bern, NC the second Saturday of each month at 12:00 noon. For up to date info on their meeting:

<https://www.facebook.com/nbmmgnc>

Wilmington, NC Plastic Modelers

Meets at the new Hanover County Public Library, 3802 S. College Rd, 1st Saturday, 2:00 pm Wilmington

<https://www.facebook.com/groups/117277425006833>

Jacksonville NC Plastic Modelers

meet every third Wednesday at 7:00 pm at The Hobby Chest, 345 Western Blvd, Jacksonville, NC. The

(continued on page 2)

Events

(continued from page 1)

Hobby Chest carries a great selection of hobby kits and supplies and is a grand center for tabletop gaming activities. <https://www.facebook.com/groups/1319666224752922>

IPMS Eagle Squadron General meeting on the second Sunday at 1:00 pm - 3:00 pm at the American Legion Post 116 in Fuquay Varina and an Informal Build Night, Hangar 18 Hobbies in Cary the last Wednesday of each month from 6pm-8pm. <https://www.facebook.com/IPMS-EagleSquadron>

Carolina Maritime Model Society
Next meeting will be 2:00pm, September 25 at the North Carolina Maritime Museum, 315 Front St., Beaufort, NC. This group builds ships and boats and the museum is a great meeting space. <https://www.facebook.com/CMMSNC>

Model Con Roundup

NEW DATE!! Sunday, May 14, 2022
Smoky Mountain Model-Con
9245 Fox Lonas Rd. NW,
Knoxville, Tn
WWW.KNOXVILLESCALEMODELERS.COM

39th Annual Smoky Mtn Model-Con
Presented by
The Knoxville Scale Modelers Assoc.



9:00 am to 4:00 pm
KNOXVILLE CATHOLIC HIGH SCHOOL 9245 FOX LONAS RD. NW, KNOXVILLE, TN 37923
MODEL CONTEST Aircraft, autos, armor, dioramas, fantasy, figures, sci-fi, ships, and more on display.
Contest entry forms & judging info available on our website.
HOBBY VENDORS RAFFLE DRAW with great prizes
Contestant Admission: Adults - \$10.00 for first 3 models and \$1.00 for each additional model. Under 18s - FREE General Admission: Adults - \$5.00 Under 18s - FREE



Bullitt's Mustang

After a harrowing build of Cousteau's Calypso, Dennis Korn takes us from TV-land to MovieWorld with a fun, relaxing and easy build of the tricked out Mustang Steve McQueen made famous in the film.

After my lengthy and fun-filled (dripping with sarcasm) build of the Calypso, I decided I needed a mojo build. Something that would be fun, quick and not too much of a pain in the brain. I decided on the 1968 Bullitt Mustang from Revell. This kit comes with pre-painted parts, including the wheels, exhaust system, and the metal body. It is designed to be an almost snap together kit that you final assemble with some screws. What could go wrong?

Steve McQueen is one of my favorite actors and Bullitt is a classic movie. Being a car guy (having taught Automotive Technology for 30 years officially qualifies me as a car guy), and a lover of early Mustangs (my favorite would be a 1966 GT-350H), I rummaged through the stash and pulled out these beauties. I have both the Mustang and the Charger from the movie, but decided to only do the Mustang at this point . . . I will save the Charger for another mojo day.

Each year, not counting the Covid year, there is a "Friends of Steve McQueen Automotive and Motorcycle Show" at the Boys Republic in Chino. This is a place Steve Mc-

Queen spent time growing up after a troubled youth. Each year they theme the show to one of his movies. While living in Southern California I had the opportunity to attend this show a number of times. The LeMans and Bullitt themed shows stand out as two of my favorites. While at the Bullitt themed show, I was fortunate to pick up a copy of the recently released book "McQueen's Machines" by Matt Stone, and even more fortunate to have the author and Steve's son Chad McQueen sign my copy.

Back to the model. Just slapping the model together would never do, so I decided to experiment with various techniques that I have not tried before to improve on the model. I have not built many model car kits, so this was a chance to learn some new tricks. The first I noticed about the model was an error in the exhaust system. The Mustang used in Bullitt ran only through glass packs and did not have a cross-over muffler at the rear of the exhaust. So I had to cut out the offending piece and clean up the exhaust with a sanding stick. After repainting with Vallejo Metal Colors - Silver I added some

(continued on page 5)

On Being Clean and Thin

An alternative to commercial thinners by Marshall Smith

DISCLAIMER: *I have a financial interest in the following product described later (much later) in this rambling dissertation.*

Just about the time I started attending the ECPM IPMS chapter, I also started to investigate weathering my HO model railroad rolling stock and buildings to look more realistic.

I purchased a nice small compressor that can live under my modeling workbench (a commercial grade office 90° worktable rebuilt into a

I have decided on using Acrylics for my weathering.

I realize people use Enamels and get stunning results, but many model railroading articles on painting and weathering talk about using Acrylics. There is an on-line Model Railroad magazine I read, and the editor has published an article on making your own acrylic thinner/ brush cleaner. And it is much cheaper than the Testors or Valeijo thinners. Testors acrylic thinner costs \$7.50 for



In all seriousness a fine airbrush is not only a serious monetary investment but a critical tool in building. Yours deserves the best cleaner you can afford.

straight work surface), an Iwata Neo airbrush, and started to look for new paints to supplement my stash of Floquil, Polly S and Model Master paints. I had used these way back in the 70's, 80's and 90's using mostly brushes and a very small amount of basic, (very basic), airbrush work with a Testors Azxtec airbrush, not usually considered a shining example of airbrush technology. Some of the paints were still salvageable even after all this time. About 30%.

Since then, I have purchased two Badger airbrushes and a no name airbrush that came with my No Name, (that's the actual brand name), compressor. With all this equipment now at my hands I needed airbrush cleaner/thinner for acrylic paints, as

4 ounces. That was the last time I bought some at the local store, and they didn't offer the 40% discount for one item per day like they used to. That comes out to \$60 per quart. When I buy the chemicals, steam distilled water, and bottles in bulk, I can sell it for \$27.95/quart and make worth my while for my time and trouble.

In addition to the steam distilled water, the formula calls for butyl cellosolve, propylene glycol, flow enhancer, and acrylic retarder. The butyl cellosolve helps the acrylic paint have better "grabbing" power and the retarder helps reduce tip dry.

I also offer small dispenser bottles that make it easier to get the thinner/
(continued on page 8)



Marshall's Home Brew Thinner as it is sold, not in stores but direct from the developer.

JOIN



I.P.M.S. is the international organization by model builders for model builders. There are many benefits to membership, check on the U.S. website for complete information.

If you do not already belong, perhaps it's time to look into a membership. It has advantages.

Meeting

(continued from page 1)

ensued regarding how to get the orange tint out of the cockpit windscreen, the consensus was to put it in a cool area in direct sunlight for a couple of days and the reddish tint will disappear.

Richard Adams presented Easy Built Models 1/20 scale kit of the Wright flyer. It's an absolutely beautiful model, with great attention to detail throughout. The model has 76 ribs, a radiator, gas bottles, and a figure of Orville, sculpted by Richard himself. Every workable surface, props rudders, move accordingly on this beautiful and delicate model. Richard was disappointed in the Orville Wright cardboard cut-out, which was part of the kit, so he made his own out of modeling clay and baked it in his oven. The reproduction and painting was so well depicted, we all thought it was part of the kit.

Richard also had a model of a 1/22 scale 1939 Aeronca Chief whose livery was that of his own 1:1 version of the model. He went so far as to put his own registration numbers, N34573. The tissue skinning work on the aircraft was flawless. In closing he held a quick lesson in how his technique produced such flawless work.

Jim's latest project is a 1/95 scale, Lindberg Line model of the Nantucket Lightship. In its initial phases, we all wish him well with the project.

Robert Bracken's figures are superb! Over the pandemic, Rob has gotten stuck-in with building Andrea's white metal 54mm kits. His Steve McQueen (Great Escape) figure looked like it was right out of the movies, his Spartan's Last Stand, circa 480 BC with its multiple figures was amazing.

Rob's work generated a lot of questions on white metal prep, priming, acrylic painting, and sealing needed to produce work of this quality. He patiently went through every step. With many of the club's multimedia kits including white metal the tutorial was extremely helpful.

Jim Harriet, "Mister Canon" brought in a Guns of History James Cannon 6-LBR 1:16 Scale Model Kit. What was remarkable was that Jim got this at an estate sale in deplorable condition. Jim spent a lot of time cleaning the model, carefully putting the broken pieces back together

with epoxy, and recreating the missing parts. The result of this painstaking restoration work is a model showing no signs of having lain at the bottom of a box in an attic for a significant time.

Alan Welch displayed three build, two 1/76 scale armor pieces finished way back in the 60s/70s (who can remember that far back?) and an Airfix new tool P-40b in classic Flying Tiger colors.

A number of items pertaining to the DownEastCon 2022 were discussed, of particular note was award selection and early sponsorship in trophies and awards. Half of the trophies and a number of medal sets are already sponsored and the chapter is happy with the prize selection and sponsorship progress.

The raffle was also discussed and David Mohr is pleased with the scale and quality of kits to be offered, not only in the general raffle but also the higher-end silent auction. Dave will be looking to ensure that there are equal numbers of kits per each raffle event. This is a two prong problem – 1) equal numbers of kits, 2) ensuring that there are equal numbers of types (planes, armor, ships, etc.). Dave will be keeping us apprised of his model count and where the shortfalls are.

The F.A.Q. page has gone live on the chapter website and we are getting close to opening the pre-registration page. We are hoping many of the builders who plan on entering the contest will pre-register as this will streamlining the entry into the event as all the contestants' paperwork will be done prior to arrival and little valuable "con time" need be wasted filling out forms at the door.

And, an important IPMS change has been announced. Now you can enroll, renew or update your IPMS membership online by going to this address:

<https://www.shopipmsusa.org/category-s/100.htm>

Hopefully this will lessen the wait when enrolling or renewing membership. Also you should be able to make your own changes due to a move or other change.

AGENDA ITEMS:

Club vs. Chapter – It was proposed and passed that we will now be referred to as a Chapter rather than a club which is in keeping with IPMS as well. IPMS/ECP-MOD Chapter

50/50 raffle:

The chapter voted to purchase a \$100 gift certificate from Hobby Chest in Jacksonville. We will raffle this off at our next meeting as a pre-holiday event to raise money for the club.

Action: Alan Welch volunteered to purchase the gift certificate.

50/50 – unanimous that we should have one. There was a lot of discussion on implementation. It was decided that we will have a rolling 50/50 and will use some mechanism (cards, dice, etc.) to create a winner. For every month that there is no winner the pot rolls. You must attend at least 3 months of meetings to be eligible to play for the pot – a great way to build attendance and subsidize upcoming purchases.

Chapter Display Banner:

Unanimous vote -- It was agreed that the chapter should purchase a banner for display at events such as our table at the model railroad show, (see below) and the DownEastCon 2022.

Action: Alan Welch is gathering cost estimates

New Bern Train Show:

Unanimous vote -- Next action is to inform the Coastal Carolina Railroad Group. Action: Mark Sandvigen to correspond with the organizers and let them know we would like a table.

Volunteer sign-ups is a coming action. Many chapter modelers volunteered to sit, converse, and build models while at the show. We will display our banner and advertise the DownEastCon while we are there.

Jay Roig Memorial

Award for Best in Show:

Unanimous vote -- We all miss Jay's presence at our meetings and in our lives so it seemed more than a good idea, it seemed the right thing to do. This meeting the chapter voted to purchase the "Best In Show Award" and dedicate it to Jay Roig.

It is a fitting way to say goodbye to a friend. ■

-Mark Sandvigen and Editor

The Bullitt Mustang

(continued from page 2)

heat signature to the exhaust system with Tamiya clears . . . Yellow, Orange, Red and Blue. The stock exhaust manifolds were treated to some Vallejo Model Colors: Burnt Umber; Saddle Brown; Red Leather; and Orange Brown to get a rusted look. Some Flory Pigments were added for texture. Results were satisfactory, but I think I can do better the next time.

The engine and engine bay area were given a minimal amount of attention (this is not meant to be a fully detailed model), so some Ford Blue engine paint gave it the Ford look. I added an aftermarket distributor cap with spark plug wires (after removing the cap that was included on the manifold) and I had to modify the air cleaner to clear the wires. The belt drive system required attention as the original car did not come with Air Conditioning or Power Steering, so those components were removed. Good thing you can't see the results . . . not a pretty sight. I painted the battery details and the radiator overflow reservoir, but that is about it.

The interior was a chance to try out a few things. I tried using Black Embossing Powder for the carpet. The results were okay and I now know that getting a proper layer of glue (I used Allene's) on the floor before putting on the powder makes all the difference. I tried to get a wood look to the dash with paint, but it was a challenge. I tried hand painting it at first (since it is assembled), but that failed miserably, so I masked it off the best I could and sprayed it with Vallejo Air Wood, then tried to add some wood grain with a brush and some wash. I used UniPosca pens (example: PC-1MR Black) for the details. These pens come in a variety



Packaging of the models of the 1968 Bullitt Mustang and 1968 Dodge Charger from the movie "Bullitt".

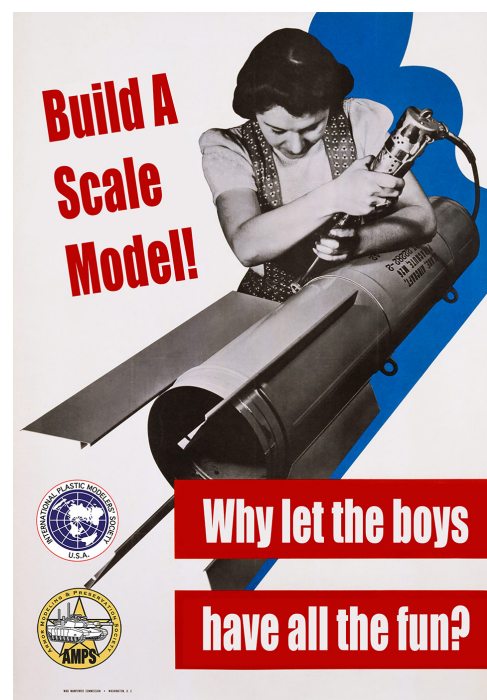
The extremely attractive packaging enhances the product and the models come with pre-painted metal bodies with the glass already installed. As both vehicles in the movie chase are offered in matching see through displays Dennis went for both . . . exactly as the producers of the kit planned it. Well, we're off to a great start.



of colors that allow detailing parts without the hassle of hand painting. The steering wheel was given a coat of Tamiya Rubber Black and the chrome spokes were finished with Molotov Liquid Chrome pens.

The rearend assembly for this model comes complete with leaf springs attached. They are extremely crude looking, but I wasn't looking to make a ton of work for myself, so I painted it in a similar fashion to the exhaust manifolds, but I used Weathering Powders to get the patina I wanted. The underbody was oversprayed with MCW Highland Green Metallic Gloss Lacquer (to match the

(continued on page 6)



The Bullitt Mustang

(continued from page 5)

body color), but I think I should have sprayed a bit more because the Weathering Powders really covered it up.

Everything was going great up to this point and then I started looking at the body. After our last meeting where I mentioned I was working on this kit, our new member from Virginia William Reece mentioned that he had done the same model and it was a bitch to add Bare Metal Foil to all the chrome trim. I had not considered the body and what needed to be done until that point, so when I got home it was time to give it some additional thought.

First thing I noticed is that the model does not come with a side mirror. So the search was on through my stash to find an appropriate mirror to use. I think I found one in a Dodge kit (don't tell the Ford people), so that was stripped of chrome and painted flat black (the movie car used a flat black side mirror to prevent reflections from the chrome mirror from screwing up shots of McQueen). I used Molotov Liquid Chrome for the mirror surface. I then taped off the window trim and tried to use the Molotov Liquid Chrome pen to do a quick job on all the trim. I have not used Bare Metal Foil before so this seemed like a quick fix. Needless to say I was so wrong.

This is where things took a turn for the worse. On the front of the hood my tape did not stick down (my fault) and a little chrome got onto the body. I screwed the body up trying to get it cleaned up, but a light brushing of the MCW color made it not seem so bad.

(continued on page 7)

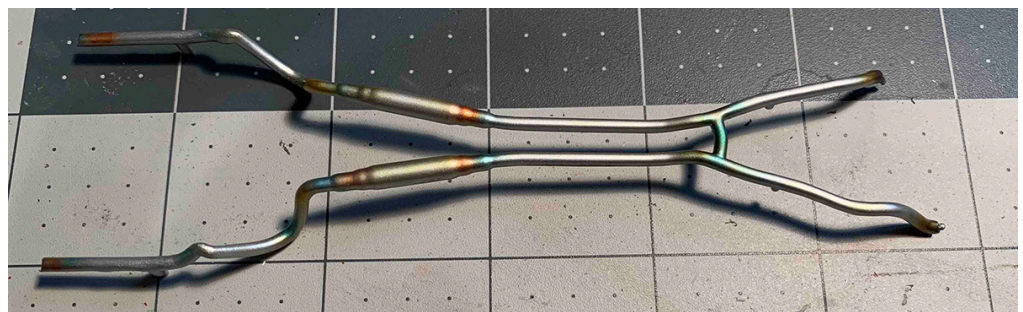
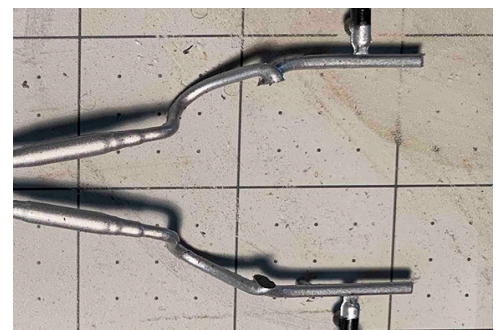
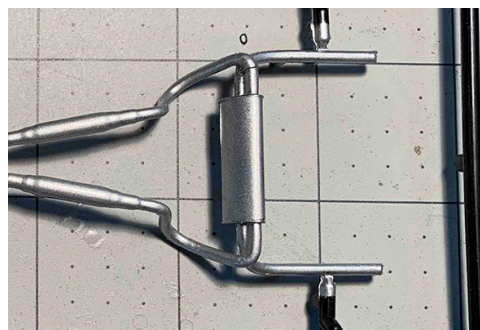


(Above) The kit and instructions, the chrome parts are pre-painted (inner wheel) and are a standard plastic, but the black parts appear to be Delrin or similar plastic

(Below Left) A close-up of the pre-painted exhaust system. The original Bullitt Mustang did not come with a cross-muffler, but only had the glass packs . . . this will need to be fixed

(Below Right) Cutting out of the cross-muffler; some sanding blended in everything

(Bottom) Another coat of silver and then progressive coats of Tamiya clear color: yellow, orange, red, blue



The Bullitt Mustang

(continued from page 6)

Then I went to drill the hole to add the side mirror. Remember this is a metal body, so drilling was going to be tougher. Naturally I didn't think to tape off around the hole and naturally I broke a drill bit and put a gash in the body. Shit! So I decided I could sand it down a touch and retouch the paint with a light coat of MCW color. Well two things happened. One I shook up the paint real good and then decided at that point I could try to fix the hood even better than before. So I masked off that small spot and grabbed the paint to give it another good shake.

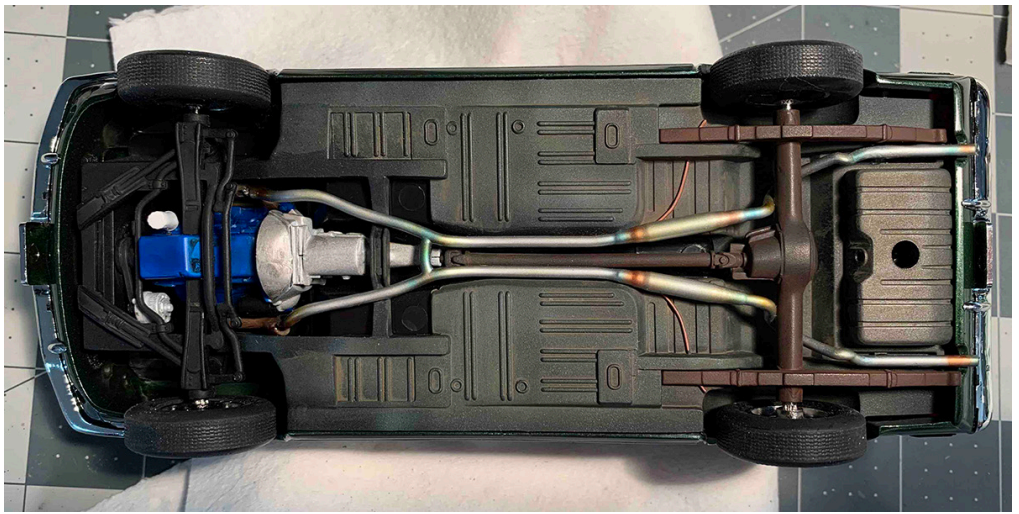
The problem is I had started to unscrew the paint top before I decided to mask off the hood. You can see where this is going. I grabbed the paint (luckily I had my finger on the top) and gave it a good shake with the top loose . . . paint went everywhere. Shit again! After cleaning up my mess, I kept at it and laid a good couple of coats down. Problem is the metallic did not come out (not sure what happened) so after drying I tried a brush coat, then a sand and polish to blend it in. I think I ran out of talent somewhere along the line . . . very early on.

So fortunately for me, I had another one of these kits in stock. So I took the body out of the new kit and decided that this one did not need all that trim to be chrome . . . it would just mess up the camera work in the movie anyway . . . lol . . . Calling it done! ■

-Dennis Korn

Note: Another photo of the finished "Bullitt" Mustang is on the meeting photos page 13.

- Editor



Completed underbody. Added an aftermarket oil filter; painted the rear axle assembly and weathered with powders; painted the gas tank; added some MCW Evergreen paint overspray and weathered the chassis with powders.



Though you really can't see them, I wanted to practice painting and weathering the exhaust manifolds. The car used a stock exhaust, except for eliminating the cross - muffler.



In the engine bay, I did not do much to this area, except detail painting and adding an aftermarket distributor cap with wires. Had to modify the air cleaner to fit over distributor cap. Had to extensively modify (remove parts) from the front drive belt assembly. The car did not come with air conditioning or power steering, so these were removed.

Keeping Thin

(continued from page 3)

cleaner into your paint or airbrush. \$30 for both unless and until the bottle prices go up.

It does seem to work at least as well as the commercial thinners. And it is a little less than half the price if you don't need the small dispenser bottle or half-price if you do get the bottle.

Note: It is not for use with Tamiya paints, as they use alcohol as a thinner in their paint formula. Nor is it to be used with any enamel type paints.



(above) A small dispensing bottle to make it easier to load the cleaner into your brush. I can supply these as well.



(above) For spraying to keep the flow smooth and flat this is added for convenience. No more guess work in mixing and no more disappointing results.

There are several other, inherent advantages to using my formula. For instance, since it is not alcohol base the odor factor is reduced and it is not flammable so if fire safety is a concern you can put that one to rest as well.

I also offer a limited money back guaranty. If anyone buys this from me, tries it, and doesn't like it, they can return the bottle if it is at least $\frac{3}{4}$ full and I will refund their money. This applies to the two Chapter members who purchased bottles last meeting.



(above) The retarder is also added at formulation to keep your airbrush tip clean and functioning smoothly. This also aids clean up at the end which makes everyone happy.

For ECPM chapter members, of course, it's a direct hand off but for out of town purchases a small shipping charge will be added. We are busily setting up business contacts but temporarily you can contact me through the chapter at:

e.c.p.m.signup@gmail.com

for further information and questions. In the meantime, stay clean and thin, my friends. ■

-Marshall Smith

Jim Harriott's finished Guns of History 1:16 scale 6-pounder Civil War field piece. Jim luckily found the kit in a sad state in an estate sale and lovingly brought it back from the brink and finished it beautifully.



Jim Harriott's said he has just about finished his collection of land based Civil War artillery with this 1:16 scale 6-pounder and now wants to move on to naval ordnance. What a display the entire body of work would be.



(above and above left) This month we welcome back Robert Brackin who arrived with two finished works and a number of kit boxes for display. Robert has moved into figure painting with examples such as Steve McQueen in his role from the movie "The Great Escape". (Apparently this month was models from the movies month with emphases on this actor) The detail work was fine with excellent grass detail beneath the BMW motorcycle.

(above and right) Dropping back further in history Robert modeled the last stand of the Spartans, this time not from the movie. The more complex build featured five warriors with three still in action. Well done Robert, we have needed a figure builder in the chapter.





(above, and below) Alan Welch brought in the new tool Airfix Curtiss P-40b, (beautiful kit), pretty much out of the box with weathering. The livery is, of course, Flying Tigers in China. I guess we could count this as John Wayne's aircraft from his movie of the same name if we want to continue the film theme.



Helpful Hint: Always remember the decimal point when ordering a 7.5 mm drill bit.



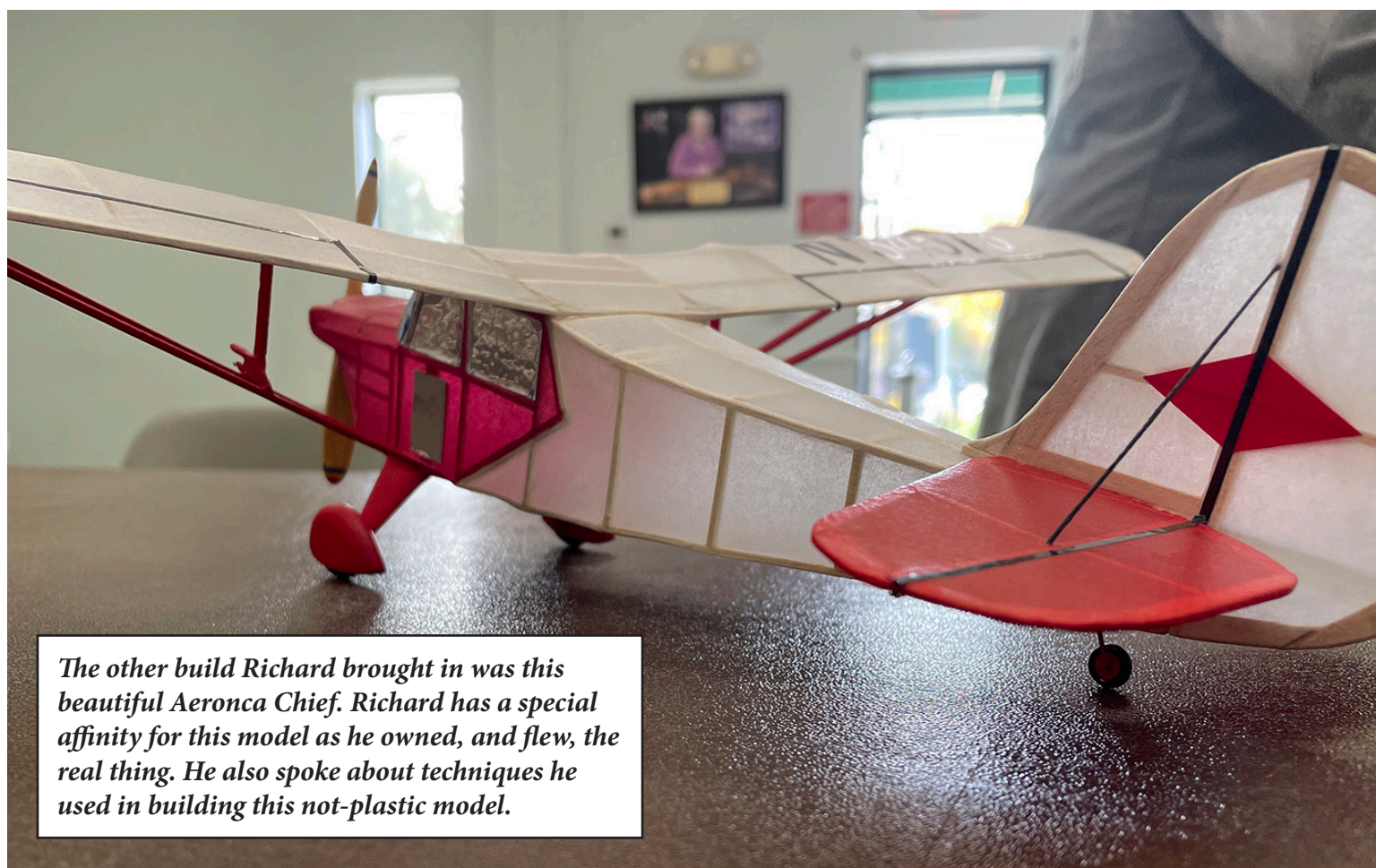
(above) Another Alan build and another old kit from a forgotten manufacturer, could have been Matchbox, maybe ESCI, who knows anymore. Interesting little armored car in 1/76, (!), scale. (Why did they do that?)



(above) Alan took the Sdkz 250 and converted into the Sd.Kfz. 250/9 leichter Schützenpanzerwagen using the open topped turret and armament from the Sd.Kfz. 222 armored car. Probably an ESCI or ERTL kit.



Another view, (one was not enough), of Richard Adams' Wright Flier. Of course all moving parts moved including the rudders and ailerons. The props rotated counter to each other and I swear Orville winked at me while I was taking pictures.



The other build Richard brought in was this beautiful Aeronca Chief. Richard has a special affinity for this model as he owned, and flew, the real thing. He also spoke about techniques he used in building this not-plastic model.



Side view of completed model (second body . . . long story) with added side mirror. The model did not come with a side mirror that is quite obvious in the movie. Movie production painted it flat black to keep the reflection out of the movie shots

IPMS/USA MEMBERSHIP FORM

IPMS No.: _____ Name: _____

Address: _____ If Renewing _____ First _____ Middle _____ Last _____

City: _____ State: _____ Zip: _____

Phone: _____ E-mail: _____

Signature (required by P.O.) _____

Type of Membership ☐ Adult, 1 Year: \$30 ☐ Adult, 2 Years: \$58 ☐ Adult, 3 Years: \$86

☐ Junior (Under 18 Years) \$17 ☐ Family, 1 Year: \$35 (Adult + \$5, One Set Journals) How Many Cards? _____

☐ Canada & Mexico: \$35 ☐ Other / Foreign: \$38 (Surface) Checks must be drawn on a US bank or international money order

Payment Method: ☐ Check ☐ Money Order

Chapter Affiliation, (if any): _____

If Recommended by an IPMS Member, Please List His / Her Name and Member Number:

Name: _____ IPMS No.: _____

IPMS/USA

Join or Renew Online at: www.ipmsusa.org

PO Box 1411

Riverview, FL 33568-1411

DownEastCon2022



We have posted several more in our "Reasons why you, yes YOU, should come to the DownEastCon 2022" series on our website. Some of these might actually bring a smile to your face.

In addition, the FAQ page has also gone live. This column should answer most of your questions about our CATCH '22 project. If it doesn't, it also lists a direct communication link where you CAN get answers to your specific questions.

One of the many things we are working hard on is streamlining the entry process. If you want to avoid wasting valuable "con time" waiting in

line and filling out the necessary paperwork while in the midst of all the craziness that comes with crowds and noise then please take advantage of our brand new pre-registration option.

You will be able to safely and securely register and pre-pay online, then download the form to be displayed with your build which you can fill out **at home in your spare time!**

Then, pack your filled out forms along with your models and once they are verified and you collect your free raffle ticket at the front desk, you're in! It's designed to be much faster and far

more convenient than ever.

The Havelock Tourist and Event Center is a great place for this event with great air conditioning, fine amenities, and many eateries and restaurants in close proximity with at least one within walking distance.

Our plan is to continue to post new updates and information regularly on our website:

<https://www.ecpmod.com/downeastcon-2022.html>

So visit the site often and we'll be happy to answer any questions and concerns and help you stay tuned. ■

-Editor

Editor's Note:

It's November, the month of Thanksgiving, the holiday season is in full flow, Fall, leaves changing, and all that jazz. It's a time of family, friends and holiday get-togethers, fine food, festivities, and . . . well, models.

Yes, models. After all, building a couple of buildings for my wife's N scale electric train is how I got back into building in the first place.

So, why am I bringing this up? Just to plant a seed. Maybe a model & a bottle of cement might make a great holiday gift for one of your younger relatives. And, who knows . . . it just might plant a seed that could grow into another builder. Just a thought.

Hope your Thanksgiving was happy and safe. ■

-Editor



Don't forget, next month's meeting will be Saturday, December 18, 12:00 noon till 2:00 at the Fairfield Harbor Activity Center, 904 Coral Reef Drive.

Please bring your new builds and any work-in-progress projects.

Isn't it time you joined IPMS? http://www.ipmsusa3.org/uploads/ipms_application_form_2019.pdf